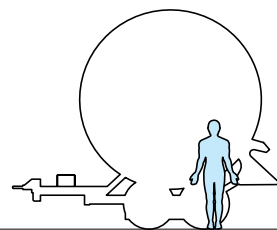
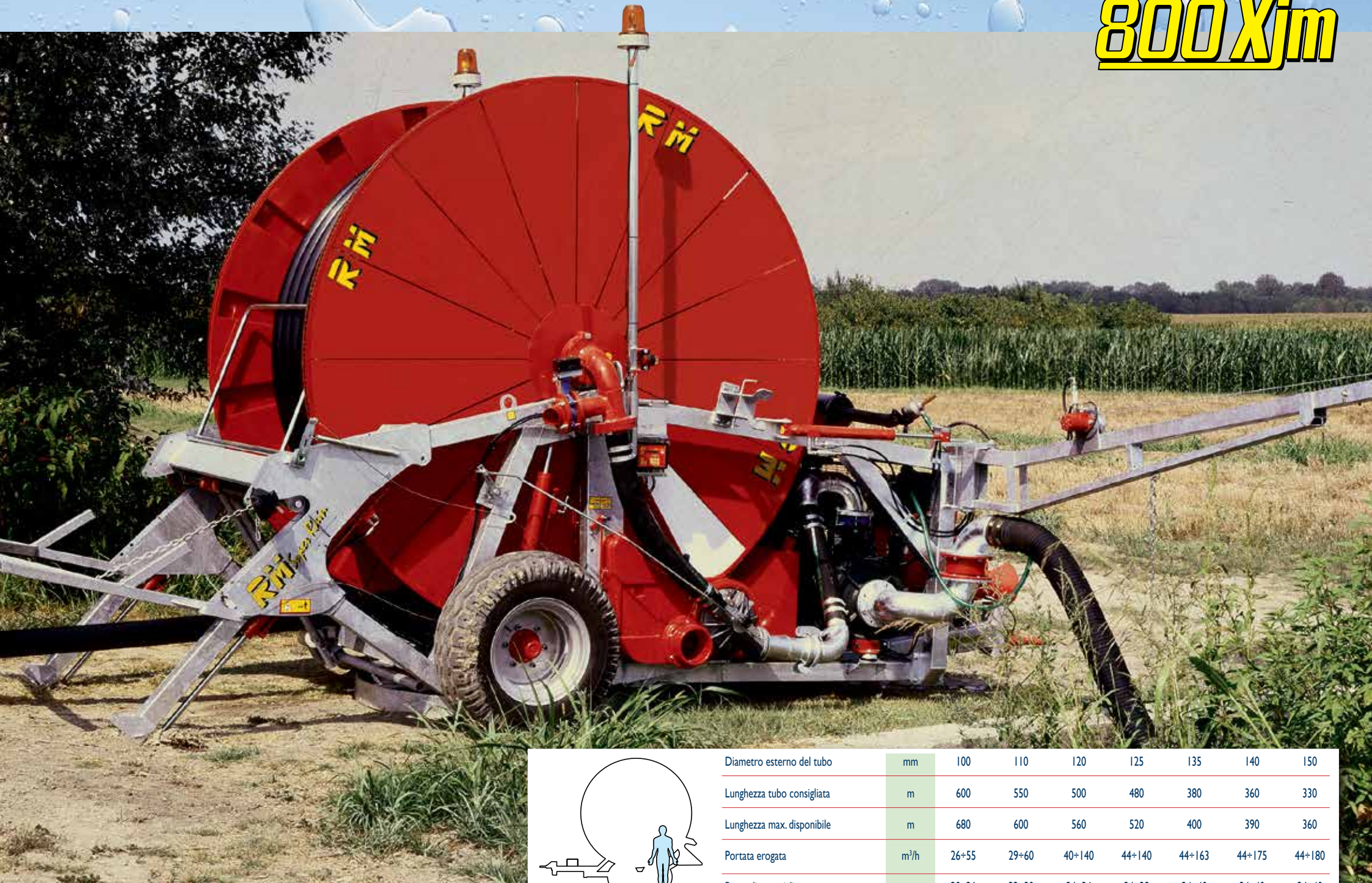


# 800 Xjm



Diametro esterno del tubo	mm	100	110	120	125	135	140	150
Lunghezza tubo consigliata	m	600	550	500	480	380	360	330
Lunghezza max. disponibile	m	680	600	560	520	400	390	360
Portata erogata	m <sup>3</sup> /h	26+55	29+60	40+140	44+140	44+163	44+175	44+180
Boccaglio consigliato	ø mm	20+26	22+30	24+34	24+38	24+40	24+40	24+40