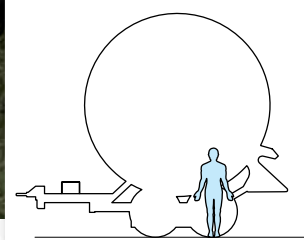
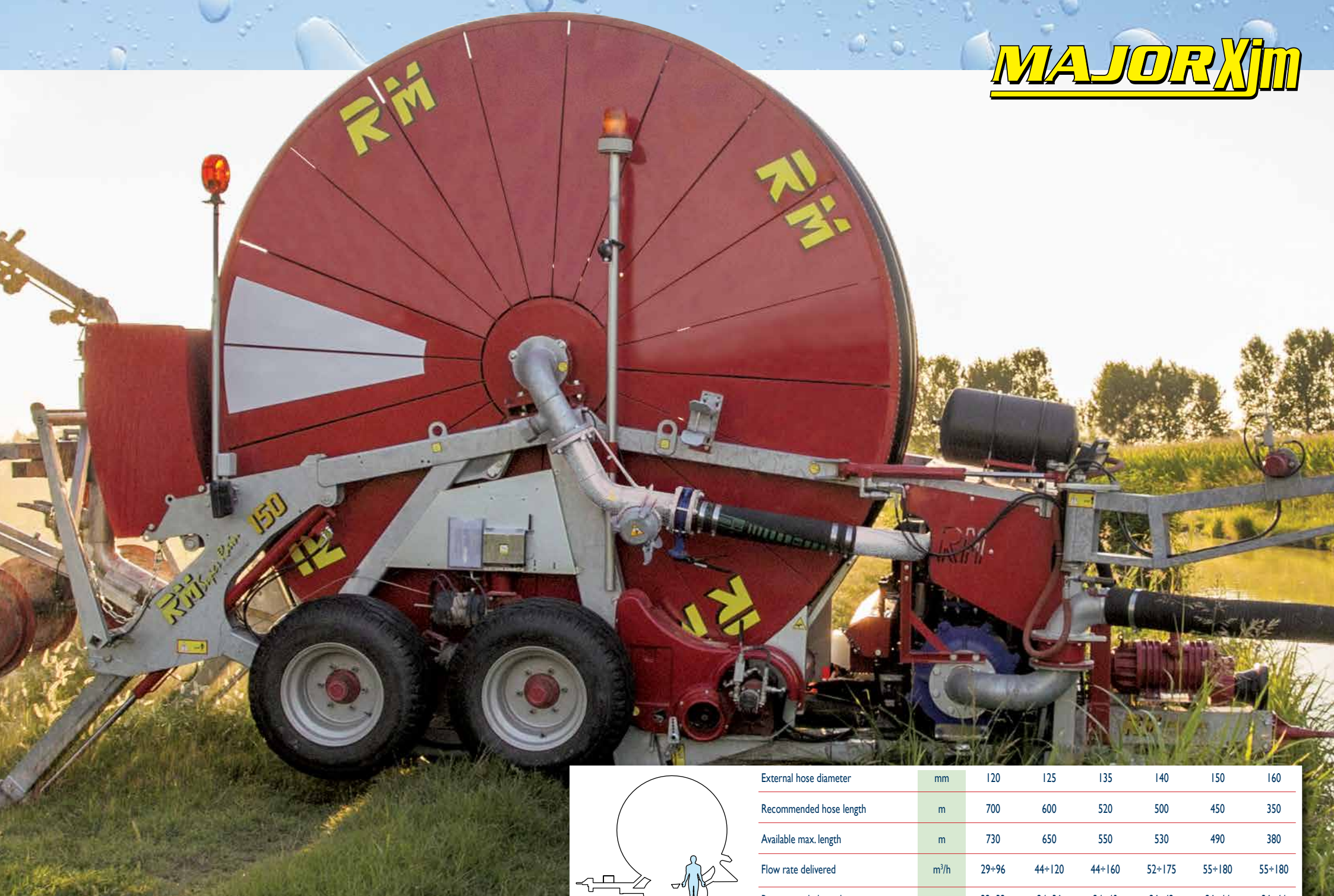


# MAJOR Xjm



External hose diameter	mm	120	125	135	140	150	160
Recommended hose length	m	700	600	520	500	450	350
Available max. length	m	730	650	550	530	490	380
Flow rate delivered	m <sup>3</sup> /h	29+96	44+120	44+160	52+175	55+180	55+180
Recommended nozzle	ø mm	22+32	24+36	24+40	26+42	26+44	26+44