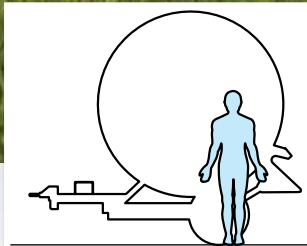


570 gX_{EVO}



| | | | | | |
|----------------------------|-------------------|-------|-------|-------|-------|
| Diametro esterno del tubo | mm | 75 | 82 | 90 | 100 |
| Lunghezza tubo consigliata | m | 350 | 320 | 300 | 200 |
| Lunghezza max. disponibile | m | 360 | 330 | 310 | 220 |
| Portata erogata | m ³ /h | 14÷26 | 19÷48 | 25÷52 | 26÷60 |
| Boccaglio consigliato | ø mm | 14÷18 | 16÷24 | 18÷28 | 20÷28 |